

## Setup-Instructions for ircDDBGateway with Icom hardware for DD-Mode

This document describes how to setup a DStar-repeater with the G4KLX ircDDBGateway software and Icom hardware. It includes the setup of DStar DD-Mode with DHCP and shows how to connect it to the amprnet.

ircDDBGateway is a powerful, free and open gateway software written by Jonathan Naylor, G4KLX. It can be found in the Yahoo Group "ircddbgateway" (<http://groups.yahoo.com/group/ircDDBGateway>)

ircDDBGateway supports homebrew hardware as well as Icom hardware and also a mixed configuration of Icom and homebrew components.

There is no homebrew hardware solution for DD-mode yet, the Icom RP2D is needed for DD-mode.

DD-mode with ircDDBGateway only works on Linux systems, not on Windows!

Samples shown in this document are based on the setup of DB0MYK.  
All sample files will be supplied in a separate ZIP-file.

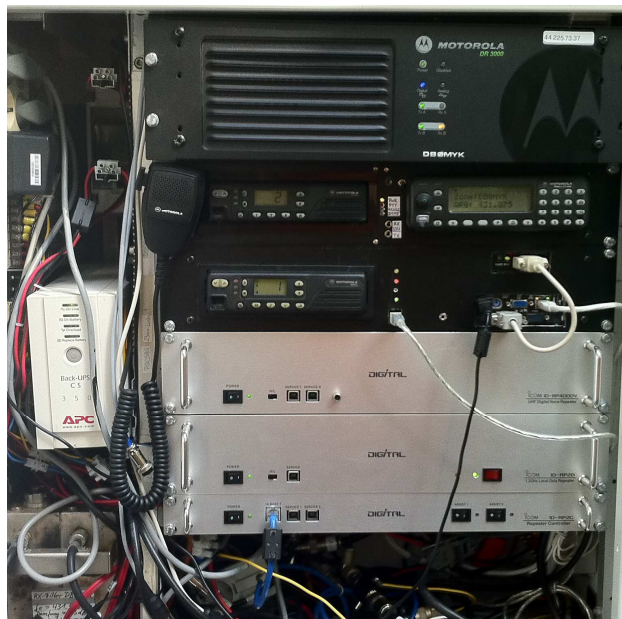
This configuration is part of the ircDDBGateway installation packages for CentOS5 and Debian (ARM and i386)

You are invited to add your comments, ideas, improvements, critics ...

Hans-J. Barthen, DL5DI  
Franz-Josef-Str. 20  
56642 Kruft  
Germany  
Email: dl5di@darcd.de

## Table of contents

1. Introduction
2. Setup of the Icom Gateway Controller RP2C
3. Setup of the Icom DD-Module RP2D
4. Setup of ircDDBGateway
5. Setup of the Gateway-PC
6. Optional Tools
7. Closing



RP4000V, RP2D and RP2C at DB0MYK,  
next to APRS Digipeater, Echolink and DMR-Repeater.

## 1. Introduction:

### Hamnet/AmprNet

At DB0MYK DStar-DD-mode allows users to access the “Hamnet”, which is the high speed part of the amprnet in Europe.

**The worldwide amprnet is our own closed network used for amateur radio only!**  
**For me it really makes sense to use it for DStar Digital Data.**

You will find more information on amprnet and hamnet in different languages on the web:

<http://en.wikipedia.org/wiki/AMPRNet> (English language)

<http://db0fhn-i.ampr.org/doku.php?id=projects:wlan:hamnet> (English language)

<http://www.amateurfunk-wiki.de/index.php/Kategorie:HAMNET> (German language)

<http://de.wikipedia.org/wiki/HamNet> (German language)

and many more.

### DHCP

My setup at DB0MYK provides all necessary network information by DHCP.

The big advantage of DHCP is that users without any network knowledge may use it easily.

It is as easy as connecting a PC to a usual DSL- or WLAN-router.

Not all OM's are network and internet specialists.

A disadvantage of DHCP is a changing IP address which makes peer-to-peer routing more complicated.

I personally do not think that P2P routing is the main purpose of DStar-DD. Most users do not run any services on their PC that might be connected from the net; a standard Windows installation with firewall enabled will not even answer a ping by default.

Servers should be connected to the network by a faster link, however, they could also get fix IPs.

But anyway, I have built a little web-tool which shows the actual users from the DDMode.log of ircDDBGateway with the current IP address from DHCP-leases. Users can see on a webpage of the gateway who is on air in DD and what the actual IP address is.

There is much room for improvement at that place; dynamic IP addresses should not be an unsolvable issue!

## 2. Setup of the Icom Gateway Controller RP2C

The setup of the RP2C is as usual:

File Option

Read Write

ICOM

Utility for ID-RP2C

Revision 2.0  
(C) 2004-2007 Icom Inc.

General

Firmware Revision1.2

Callsign DB0MYK

Repeater ID 1

Gateway

☒ Use Gateway

IP Address 172.16.0.20

Port 20000

Local RPT

Config D:V:V:V

(1) ☒ Data A

(2) ☒ Voice B

(3) ☐ Voice

(4) ☒ Voice A

Local Server

☐ Use Local Server

Communication Settings

IP Address 172.16.0.1

Port 20319

Subnet Mask 255.255.0.0

Def. Gateway 0.0.0.0

Assist

☐ Use Assist 1 ☐ Always TX

☐ Use Assist 2

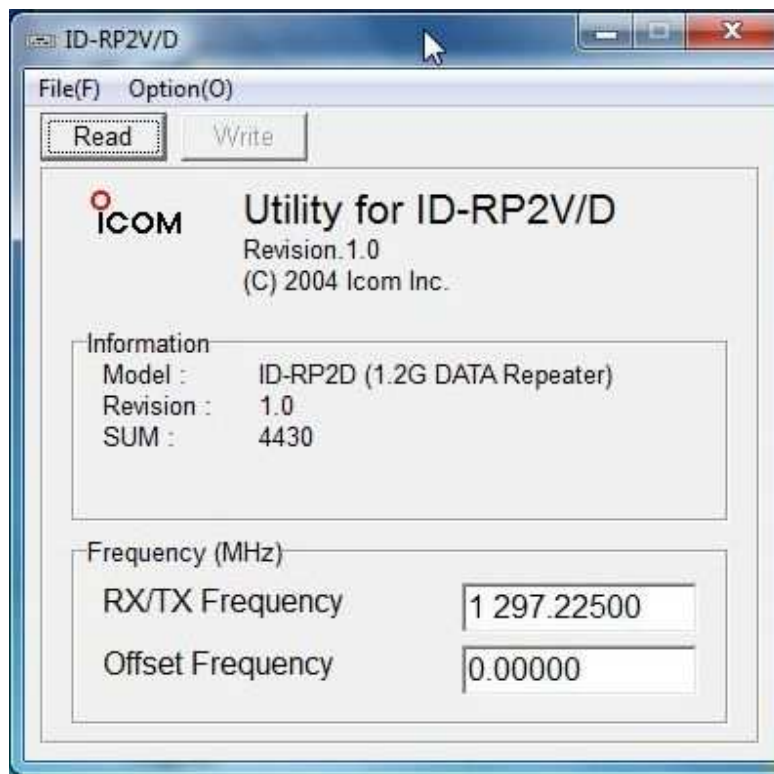
This setup shows a data module A and a voice module B enabled.

Adjust the settings to your need.

Consult your Icom manual for more details.

There is no special requirement for ircDDBGateway.

### 3. Setup of the DD-Module RP2D



This is as easy as it looks like:

Connect your PC to the repeater module by USB, start the Icom configuration utility, which is the same for RP2V and RP2D, and set frequency and offset.

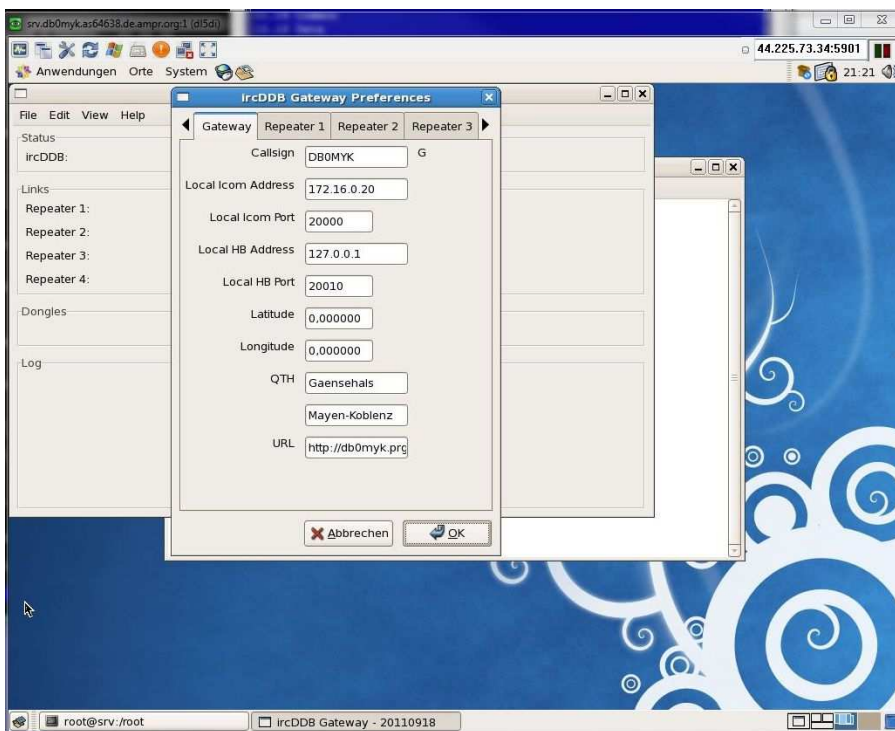
DD-mode is a simplex mode and usually runs without offset.

More details may be found in the Icom manual.

## 4. Setup of ircDDBGateway

Connect your controller to the gateway PC.

After installation start “ircddbgateway” and open the preferences.  
Enter the first menu for “Gateway” settings:



Fill in local Icom address and port like shown above.

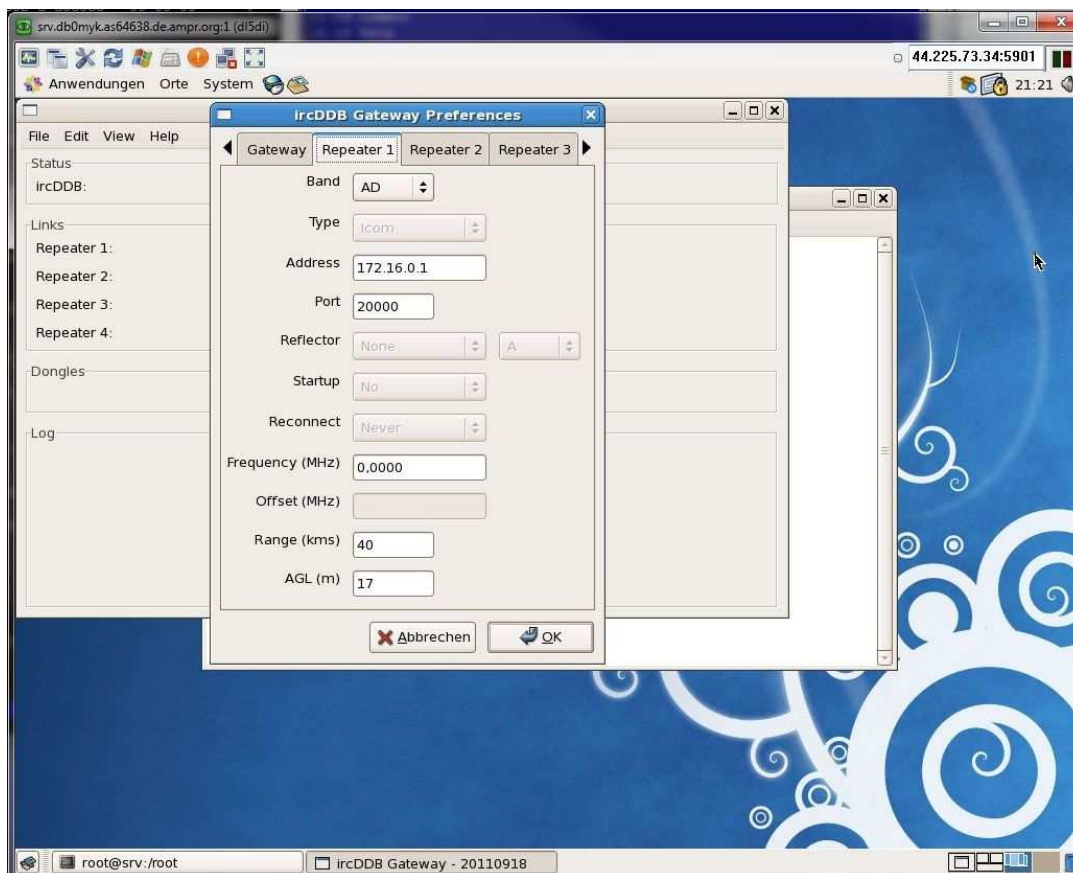
Fill in latitude and longitude values of your gateway's location.

Fill in QTH and URL to your homepage.

Note that decimal delimiters depend on your locale settings.

Press 'OK' when finished.

Change to the second menu to configure “Repeater 1”:



In my sample I selected band “AD” which is the usual DD-modul on Band “A”.

Enter the required data.

**Note:** The values for “Address” and “Port” are the same for all modules connected to the Icom controller!

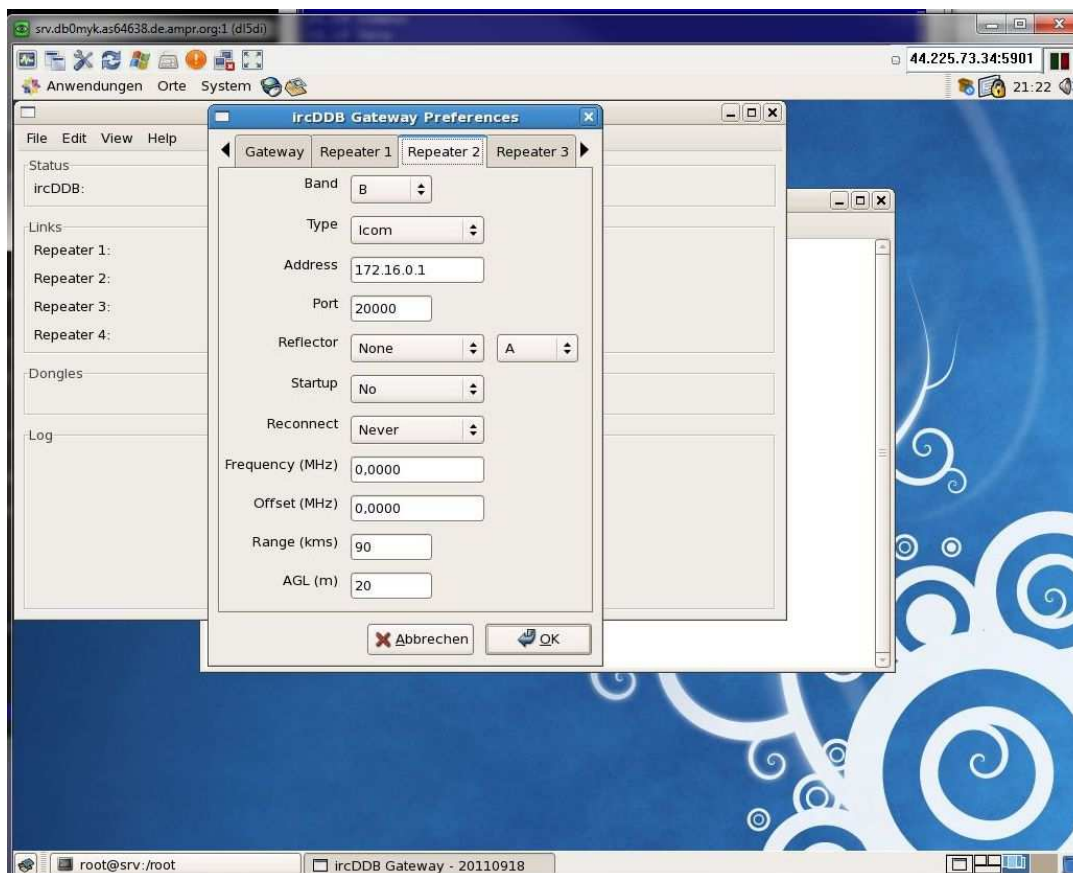
Enter “Frequency” in **MHz**, “Range” in **kilometer**.

AGL is the Antenna height **above GroundLevel !**

Press ‘OK’ when finished.



Step to menu “Repeater 2”:



In my sample I used it for the 70cm DV module on Band “B”.

**Note:** The values for “Address” and “Port” are the same for all modules connected to the Icom controller!

Enter “Frequency” in **MHz**, “Range” in **kilometer**.

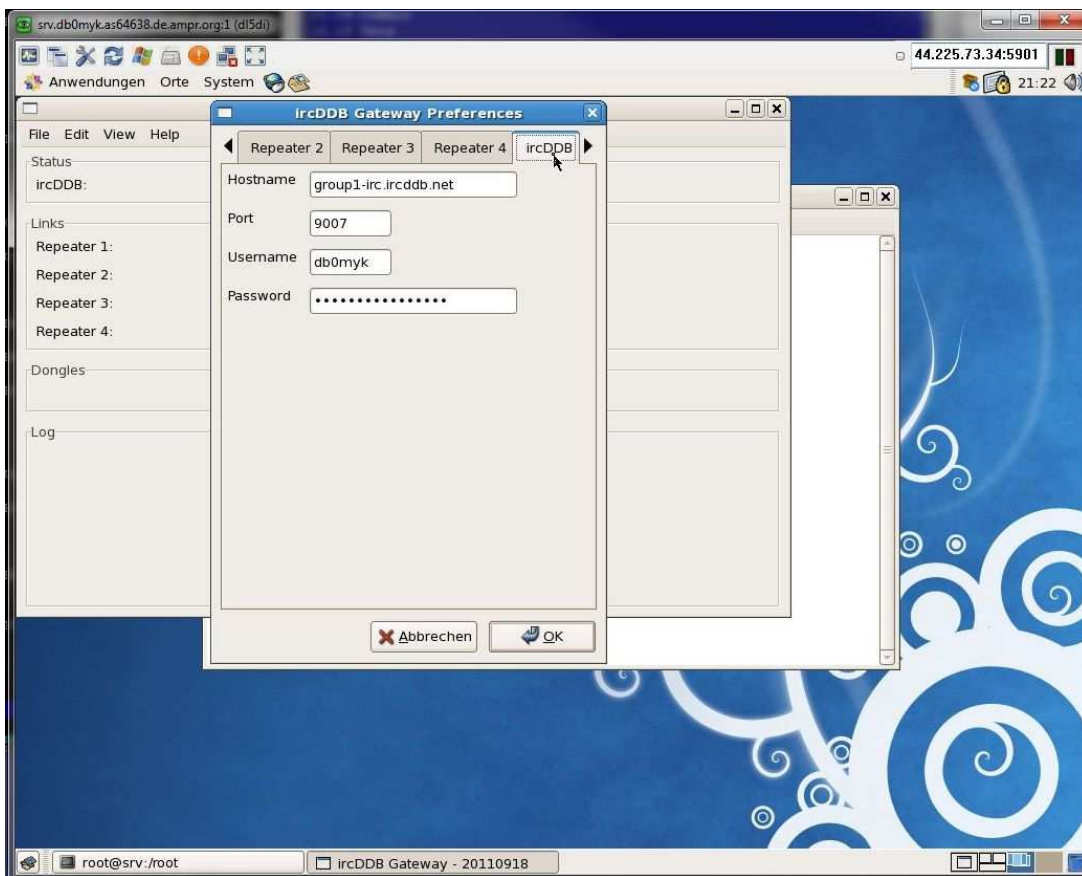
AGL is the Antenna height **above GroundLevel !**

Press ‘OK’ when finished.

Fill more sheets for more modules as needed.



Step to Menu "ircDDB":



Data entered in this menu are necessary to log into the ircDDB routing network.

The first field is the 'Hostname' of an ircDDB server group.

ircDDB uses 2 different groups of servers.

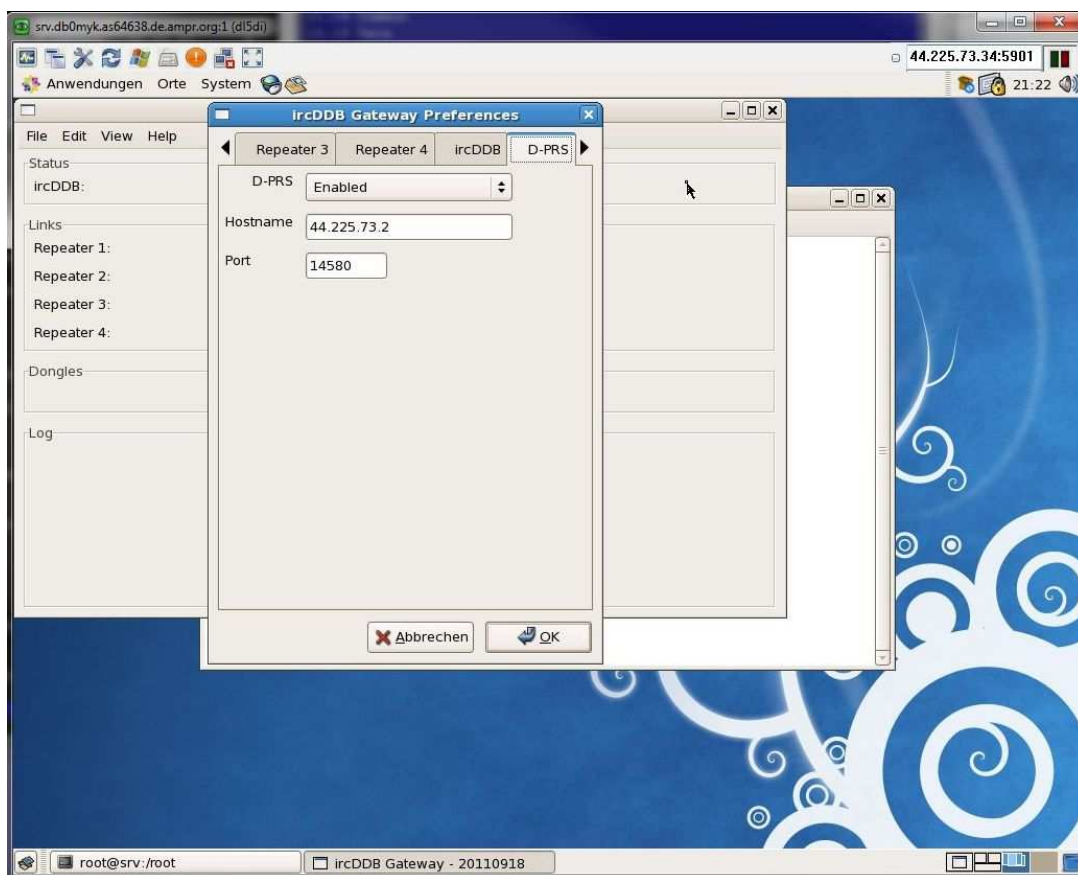
If you are located in North America please enter 'group2-irc.ircddb.net',  
use 'group1-irc.ircddb.net' outside of North America.

The port should always be 9007.

"Username" is usually the callsign of the gateway, the "Password" is a 16 digit random string that you got by email after registration on the ircDDB registration website <http://regsrv.ircddb.net>.

Press 'OK' when finished.

Select menu "D-PRS":



Enter the network address and port of your favorite APRS server.

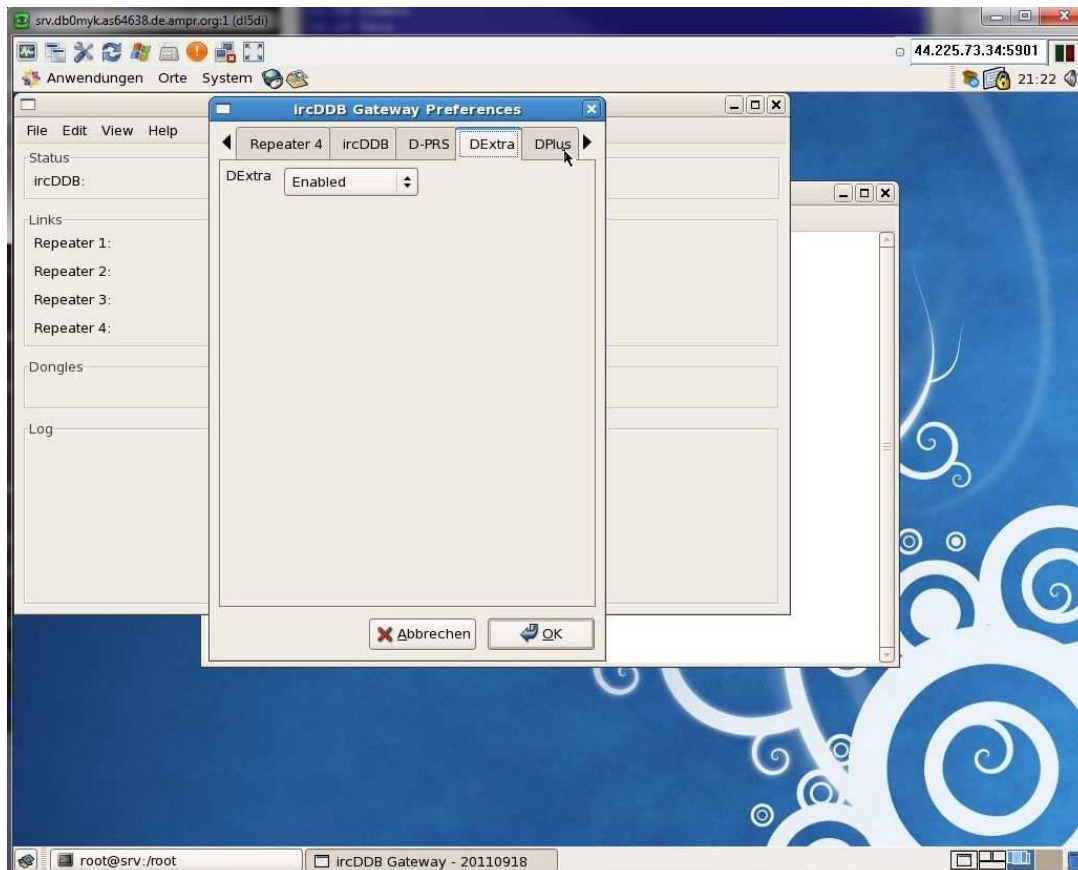
Please find more information here: <http://www.aprs2.net>

At DB0MYK I use a server which offers a port on the amprnet.

Next 2 menus are for configuration of reflector settings.

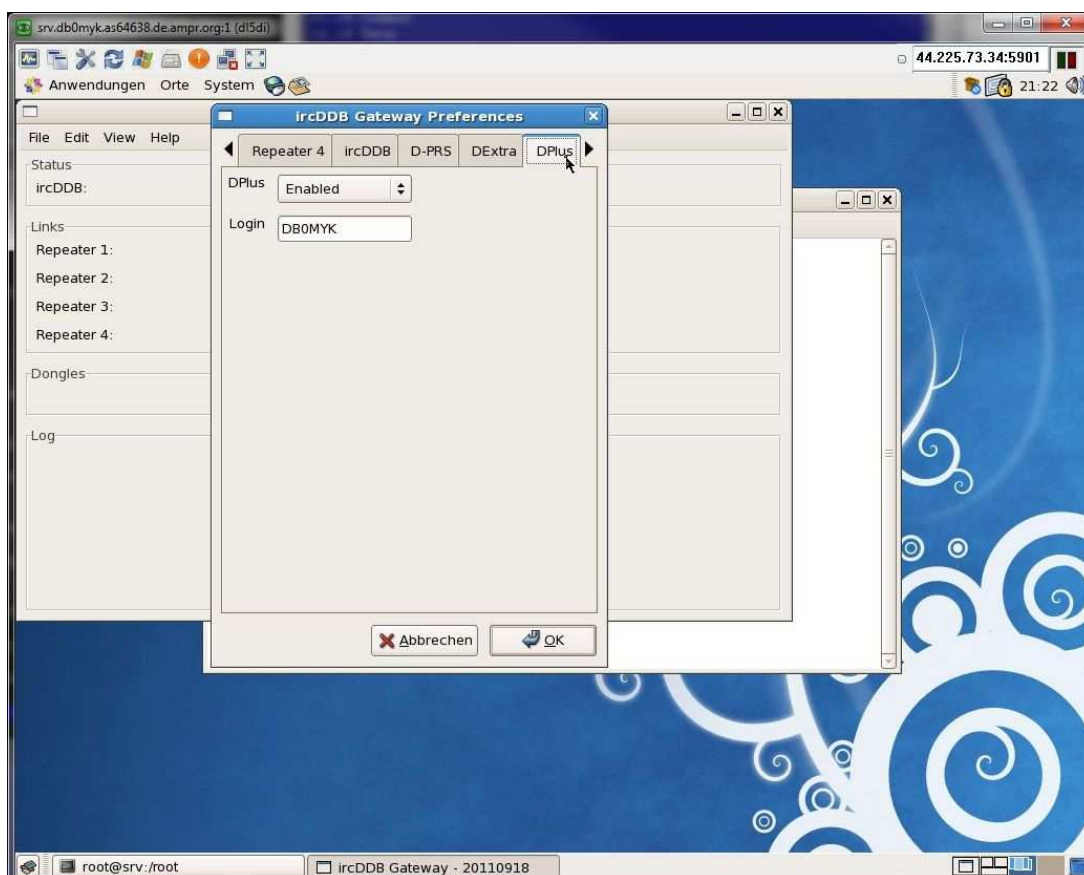
ircDDBGateway supports both reflector networks, DPlus and XReflector.

## DEXtra-Setup



Check if you want to enable/disable DExtra reflector feature.

## DPlus-Setup



Check if you want to enable DPlus reflector feature.

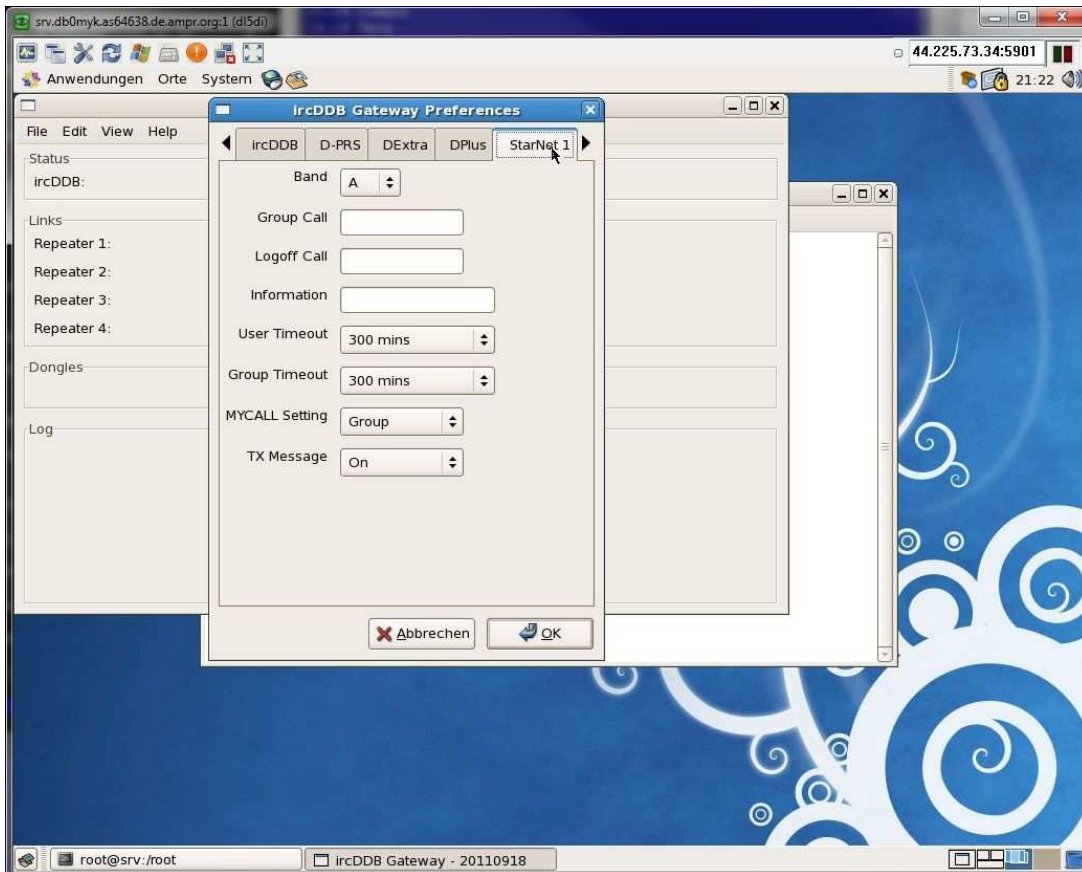
Enter a callsign which is used to login to the DPlus network.

This callsign has to be a registered user callsign at the US trust network.

### **Note:**

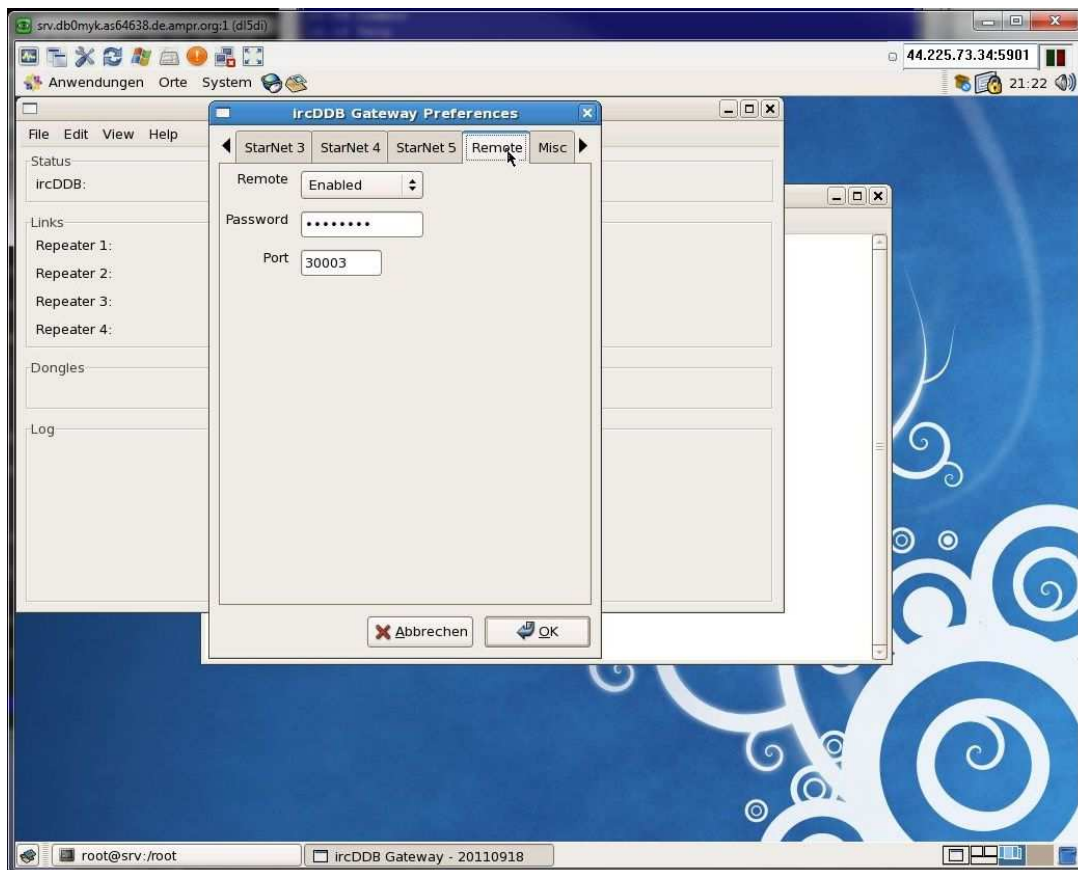
User registering of a gateway callsign at the US trust network may cause routing issues.  
Please use a real user callsign at this place, no gateway callsign!

Next menus are for setting up StarNet servers:



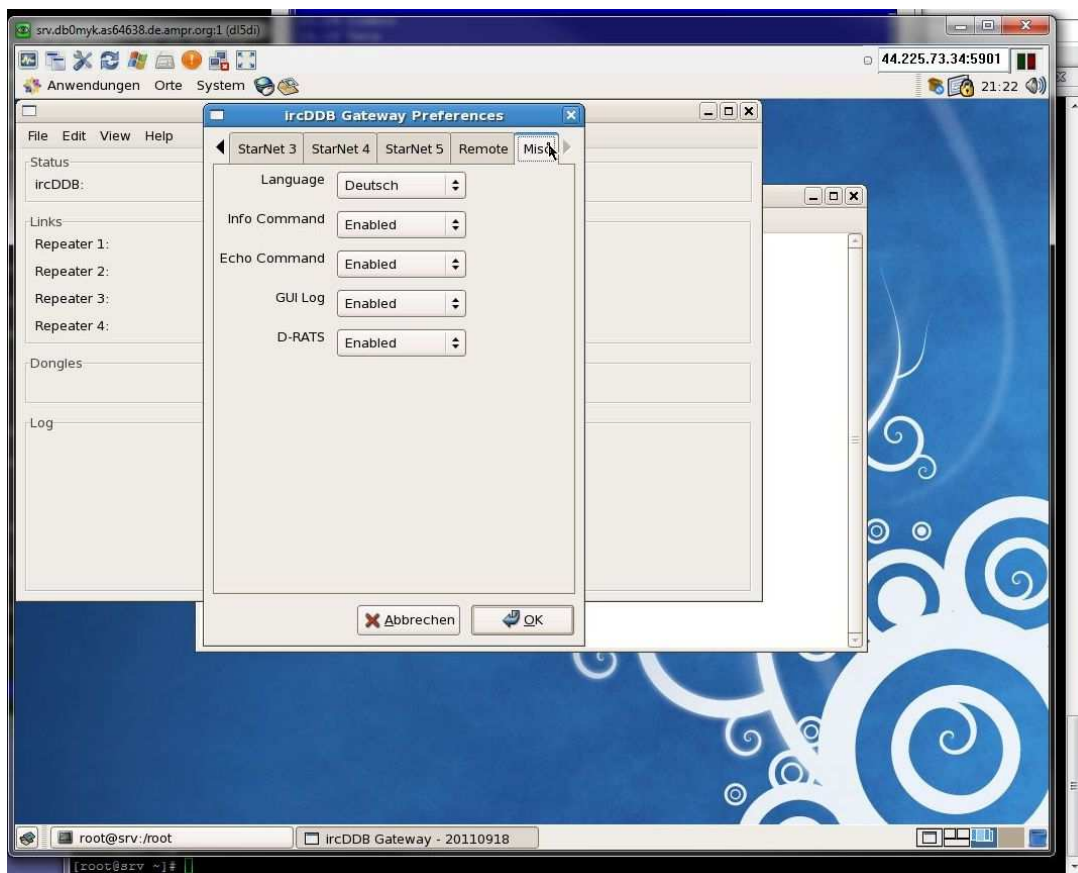
The folder “Remote” allows to configure access for a remote control console.

The console is part of the software package, it is a nice tool to link and unlink reflectors.





The last configuration folder is for setup of some “Misc” features:



Select the language for your gateway and the commands “Info” and “Echo” known from DPlus.

You can also enable logging, which is necessary to get John’s dashboard work which can be found in the files section of the ircDDBGateway Yahoo-Group.



## 4. Setup of the Gateway-PC for DD-Mode



### 5.1 Network device settings

If a DD-port is enabled ircDDBGateway will create a network device 'tap0' on the gateway PC.

Configure this new device to your needs:

```
/sbin/ifconfig tap0 44.225.73.65 netmask 255.255.255.240
```

Activate IP forwarding:

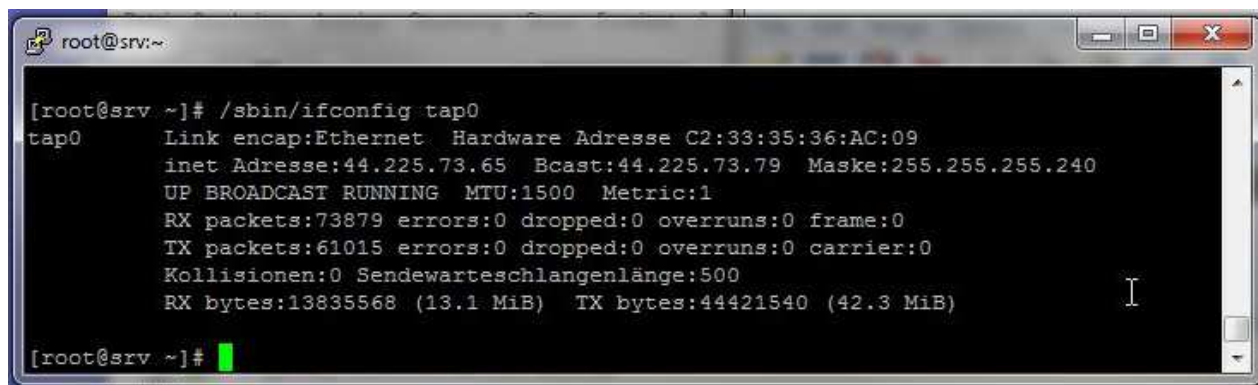
```
echo 1 > /proc/sys/net/ipv4/ip_forward
```

OR

```
/sbin/sysctl -w net.ipv4.ip_forward=1
```

Open a terminal window and enter "/sbin/ifconfig" to check the network device settings.

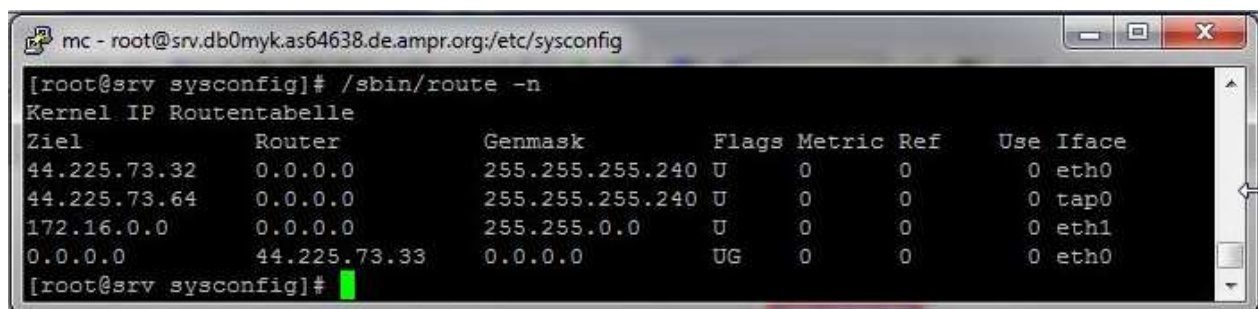
You should get something like this:



```
root@srv:~  
[root@srv ~]# /sbin/ifconfig tap0  
tap0      Link encap:Ethernet  Hardware Adresse C2:33:35:36:AC:09  
          inet Adresse:44.225.73.65  Bcast:44.225.73.79  Maske:255.255.255.240  
          UP BROADCAST RUNNING MTU:1500 Metric:1  
          RX packets:73879 errors:0 dropped:0 overruns:0 frame:0  
          TX packets:61015 errors:0 dropped:0 overruns:0 carrier:0  
          Kollisionen:0 Sendewarteschlangenlänge:500  
          RX bytes:13835568 (13.1 MiB)  TX bytes:44421540 (42.3 MiB)  
[root@srv ~]#
```

A route is created automatically.

Check it with "/sbin/route -n"



```
mc - root@srv.db0myk.as64638.de.ampr.org:/etc/sysconfig  
[root@srv sysconfig]# /sbin/route -n  
Kernel IP Routentabelle  
Ziel      Router      Genmask      Flags Metric Ref    Use Iface  
44.225.73.32  0.0.0.0      255.255.255.240  U      0      0      0 eth0  
44.225.73.64  0.0.0.0      255.255.255.240  U      0      0      0 tap0  
172.16.0.0    0.0.0.0      255.255.0.0      U      0      0      0 eth1  
0.0.0.0      44.225.73.33  0.0.0.0          UG      0      0      0 eth0  
[root@srv sysconfig]#
```

In my sample it shows the network 44.225.73.64/255.255.255.240 routed through tap0.



## 5.2 DHCP setup



The easiest way for users is to work with DHCP on the DStar-DD user port.

It is much easier than working with registrations and fix IP addresses per device.

DHCP will supply all necessary network settings; the user usually does not have to configure anything on the PC.

DHCP is used by default on Windows systems to configure network devices.

After connecting PC and ID1, configuring the amateur radio specific settings like frequency, offset and mode, entering the D-Star specific addresses (mycall, urcall, rptr1, rptr2), all network settings will be set up automatically.

A short documentation for users will be supplied in a separate document.

In my sample the dhcp server only answers DHCP requests on the tap0 device created by ircDDBGateway.

The IP address range is from the subnet '44.225.73.64/28'.

A subnet of '/28' (which is equivalent to netmask 255.255.255.240) offers 16 addresses, from which 13 may be offered to users by the dhcp server. This is usually more than enough with an appropriate lease time.

Based on my sample the subnet used on the DD-port looks like this:

44.225.73.64	network address
44.225.73.65	address used by the D-Star-gateway/DHCP-server/router
44.225.73.66 - 44.225.73.78	range for DHCP
44.225.73.79	broadcast address

**Note that 44.x.x.x is no free available address block, this is the amprnet, the IPs need to be registered!**

**Contact your local address coordinator if you want to connect to the amprnet, which to my mind makes really sense.**

Here my configuration file '/etc/dhcpd.conf' for the DStar-DD-port of DB0MYK :

```
#
# dhcpd.conf
## Hosts with more than one interface MUST specify a ``server-identifier'',
# which should be the IP address of the server's primary network interface,
# or if there is no interface that can be described that way, at least an
# interface whose address isn't likely to change.
server-identifier 44.225.73.65;
authoritative;
# option definitions common to all supported networks...
use-host-decl-names on;
ddns-update-style none;
default-lease-time 3600;                # 1 hour
max-lease-time 86400;                   # 1 day
option routers 44.225.73.65;
option subnet-mask 255.255.255.240;
option domain-name "db0myk.de.ampr.org";
option domain-name-servers 44.225.73.2;
#
subnet 44.225.73.64 netmask 255.255.255.240 {
    option routers 44.225.73.65;
    option subnet-mask 255.255.255.240;
    option domain-name "db0myk.de.ampr.org";
    option domain-name-servers 44.225.73.2;
    option ntp-servers 44.130.42.100;
#;
    range 44.225.73.66 44.225.73.78;
}
```

Start the DHCP server with '/sbin/service dhcpd start'.



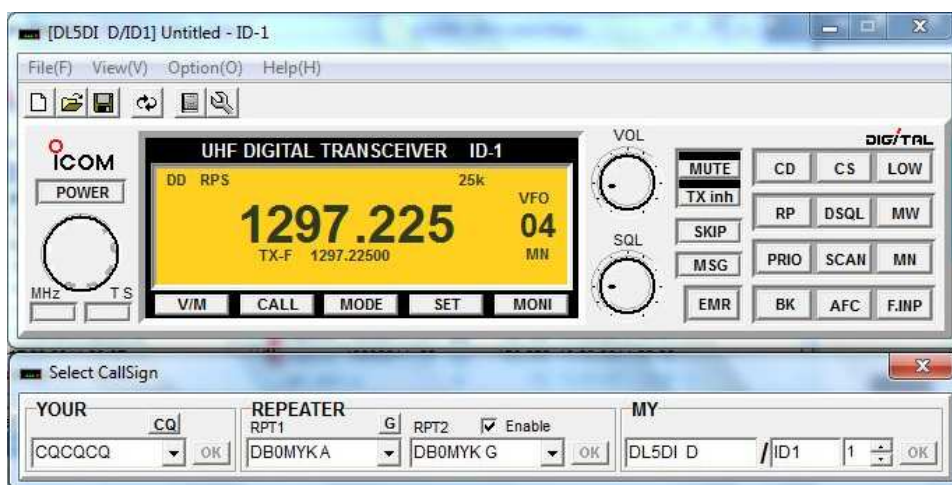
## 5.3 Test

Now it is time to take your ID1 and check if your gateway really works!

### Setup the ID1:

- Tune the ID1 to the frequency of your DD-mode repeater module.
- Select DD-Mode.
- Activate the correct repeater mode.  
The ID1 offers 'RP+', 'RP-' and 'RPS'.  
'+'/'-' for the direction of offset and 'S' for simplex.  
Most DD-mode repeaters work simplex, note that you have to set 'RPS' in that case!  
Without any repeater setting DD-mode won't work.
- After that you need to enter your own callsign, destination, repeater 1 and repeater 2.  
This works exactly in the same way like for digital voice:
- Set destination to "CQCQCQ",
- Set repeater 1 to the callsign and ID that your local repeater uses for the DD-module.  
Usually it is the ID "A" at the 8th position, like "DB0MYK\_A".
- Set repeater 2 to the gateways' callsign.  
Usually it is the repeaters' callsign with the ID "G" at the 8th position, like DB0MYK\_G.

If you have installed the remote control software on a PC, settings should look like this:



### Set up your PC

- If you are using a Windows PC and have not done any changes to the settings of the Ethernet interface yet, you have nothing to configure at all.
- If you did manual changes to the network settings, take care that the Ethernet interface has to be activated and set to DHCP mode.

### Connect the devices

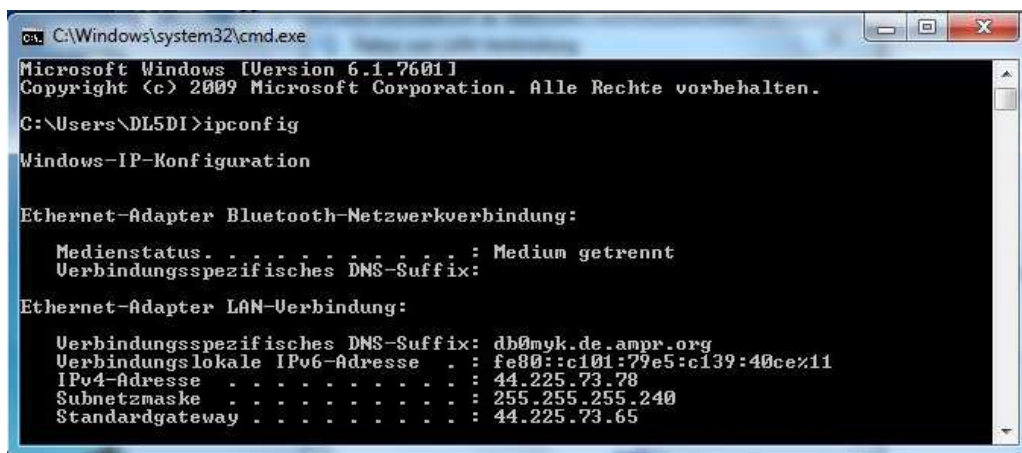
- Connect your PC and the ID1 by using a standard network cable.
- The transmitter of the ID1 is deactivated by default, it shows 'TXinh' in the display.  
Activate your ID1 by pressing the 'TXinh' button.

'TXinh' should now have disappeared from the display and you should immediately see some traffic going back and forth.

Your PC will send out a DHCP request immediately after the interface gets connected and tries to get an IP address. The gateway will supply the IP and some other necessary network settings.

Open a command window on your PC and check the Ethernet device settings.

On a Windows PC enter 'ipconfig', the output should look like this:



```

C:\Windows\system32\cmd.exe
Microsoft Windows [Version 6.1.7601]
Copyright (c) 2009 Microsoft Corporation. Alle Rechte vorbehalten.
C:\Users\DL5DI>ipconfig

Windows-IP-Konfiguration

Ethernet-Adapter Bluetooth-Netzwerkverbindung:

    Medienstatus. . . . . : Medium getrennt
    Verbindungsspezifisches DNS-Suffix:
Ethernet-Adapter LAN-Verbindung:

    Verbindungsspezifisches DNS-Suffix: db0myk.de.ampr.org
    Verbindungslokale IPv6-Adresse . . : fe80::c101:79e5:c139:40ce%11
    IPv4-Adresse . . . . . : 44.225.73.78
    Subnetzmaske . . . . . : 255.255.255.240
    Standardgateway . . . . . : 44.225.73.65
  
```

Good! It has got an IP out of the configured range 44.225.73.66 to 44.225.73.78

## 5.4 Configure automatic startup

If everything worked fine so far you will need to get it all to start automatic after a reboot.

I used the startup script from John Hays/K7VE, which can be found in the files area of the Yahoo Group "ircDDBGateway", and modified it for DD-mode.

The modifications are marked.

This modified startup script restarts the DHCP server each time when tap0 has been created new by a restart of ircDDBGateway.

Note that there are several ways to enable routing on your Linux machine, select your preferred solution:

Most common is to use `echo 1 > /proc/sys/net/ipv4/ip_forward`.

You may also use `/sbin/sysctl -w net.ipv4.ip_forward=1`.

Another way is to edit the file /etc/sysctl.conf and set `net.ipv4.ip_forward=1` in it. The default setting is 0.

Sample of /etc/init.d/ircddbgateway :

```
#!/bin/bash
#
# ircDDBGateway startup script
# John Hays (K7VE) - john@hays.org
#
# chkconfig: 2345 99 01
# description: Starts the G4KLX ircDDBGateway
# config: /etc/sysconfig/ircddbgateway
#
if [ $UID != 0 ]; then
    echo
    echo "ERROR: This script must be run as the root user!"
    echo "      Please use 'su' or log in as root and try again."
    echo
    exit 1
fi
me=ircddbgateway

# Source function library.
. /etc/rc.d/init.d/functions

# Source networking configuration.
[ -r /etc/sysconfig/network ] && . /etc/sysconfig/network

# Check that networking is up.
[ "${NETWORKING}" = "no" ] && exit 1

# Source the configuration
[ -f /etc/sysconfig/$me ] && . /etc/sysconfig/$me

start() {
    echo -n "Starting $me:"
    daemon --pidfile /var/run/$me.pid $DAEMON_PATH $DAEMON_OPTIONS
    RETVAL=$?
    [ $RETVAL -eq 0 ] && touch /var/lock/subsys/$me
    pidofproc $DAEMON_PATH > /var/run/$me.pid
    echo
    sleep 2
    # create a watchdog entry to the crontab
    echo "*/*/*/*/* root ps aux | grep $DAEMON_PATH | grep -vq grep || /etc/init.d/$me start" > /etc/cron.d/$me
    if [ "${IRCDDBGATEWAY_DDENABLED}" = "yes" ];then
        echo " - configure dd-mode network device $IRCDDBGATEWAY_DDDEV "
        sleep 15
        /sbin/ifconfig $IRCDDBGATEWAY_DDDEV $IRCDDBGATEWAY_DDIP netmask $IRCDDBGATEWAY_DDMASK
        echo 1 > /proc/sys/net/ipv4/ip_forward
        if [ "${IRCDDBGATEWAY_DDDHCP}" = "yes" ];then
            echo " - start dhcpd "
            /sbin/service dhcpd start
        fi
    fi
}

stop() {
    echo -n "Stopping $me "
    if [ "${IRCDDBGATEWAY_DDENABLED}" = "yes" -a "${IRCDDBGATEWAY_DDDHCP}" = "yes" ]; then
        echo " - dhcp for dd-mode is enabled, stop it "
        /sbin/service dhcpd stop
        sleep 15
    fi
}
```

```
killproc $DAEMON_PATH

RETVAL=$?
[ $RETVAL -eq 0 ] && rm -f /var/lock/subsys/$me
# remove watchdog entry from crontab
rm -f /etc/cron.d/$me
echo
}

restart() {
    stop
    sleep 2
    if [ "${IRCDBGATEWAY_DDENABLED}" = "yes" -a "${IRCDBGATEWAY_DDDHCP}" = "yes" ]; then
        sleep 15
    fi
    start
}

... and so on / rest untouched...
```

Delays are necessary to give the software time to create the device and configure it.

This DD-Mode configuration is part of the startup-files in the standard packages for CentOS5 and Debian.

The parameters for DD-mode on CentOS installations are set in

`/etc/sysconfig/ircddbgateway`

and for Debian installations and in

`/etc/default/ircddbgateway`

Sample settings:

```
..
IRCDBGATEWAY_DDENABLED="yes"
IRCDBGATEWAY_DDDHCP="yes"
IRCDBGATEWAY_DDDEV="tap0"
IRCDBGATEWAY_DDIP="192.168.1.123"
IRCDBGATEWAY_DDMASK="255.255.255.0"
..
```

**Please note** that this configuration only works when ircddbgateway is started from the startup script in daemon mode!

The packages provide a script `ircddbgateway.sh` which also activates the DD-mode when ircDDBGateway is started in GUI mode (it also sets the `en_US` numeric locale to fix the decimal delimiter issue in some countries)

Startscript to enable DD-Mode in GUI mode:

(/usr/local/bin/ircddbgateway.sh on CentOS5 / /usr/bin/ircddbgateway.sh on Debian)

```
#!/bin/bash
#
# ircDDBGateway start script for GUI
# Hans-J. Barthen (DL5DI) - d15di@gmx.de
#
# description: Starts the G4KLX ircDDBGateway in GUI mode and sets the LC_NUMERIC LOCALE
# to en_US.UTF-8 to make the configfile compatible for GUI and daemon mode.
# config: /etc/sysconfig/ircddbgateway
#

if [ $UID -ne 0 ]; then
    echo
    echo "ERROR: This script must be run as the root user!"
    echo "      Please use 'su' or log in as root and try again."
    echo
    exit 1
fi

NAME=ircddbgateway

LC_NUMERIC="en_US.UTF-8" /usr/local/bin/$NAME -gui &

# Take care to start necessary services for DD-mode if enabled

# Read configuration file if it is present
[ -r /etc/sysconfig/$NAME ] && . /etc/sysconfig/$NAME || echo "Configfile /etc/sysconfig/$NAME is missing"

if [ "${IRCDBGATEWAY_DDENABLED}" = "yes" ];then
    echo " - configure dd-mode network device $IRCDBGATEWAY_DDDEV "
    sleep 15
    /sbin/ifconfig $IRCDBGATEWAY_DDDEV $IRCDBGATEWAY_DDIP netmask $IRCDBGATEWAY_DDMASK
    echo 1 > /proc/sys/net/ipv4/ip_forward
    if [ "${IRCDBGATEWAY_DDHCP}" = "yes" ];then
        echo " - start dhcpd "
        /etc/init.d/dhcpd start
    fi
fi
```

This is the version for CentOS.

Change the marked pathnames from “/etc/sysconfig” to “/etc/default” and “/usr/local/bin” to “/usr/bin” for Debian.



## 5. Optional Tools



I created an optional script to show DHCP leases on the web.

This is a modification of "phpdhcpd" from <http://www.rivetcode.com>.

"phpdhcpd" is a PHP-script which shows the dhcp-leases in a nice form on a webpage.

I added a function which adds the callsign of the user from the log file "DDMode.log" created by ircDDBGateway. I also left away some fields where I think that we don't need it.

With this version the script shows Callsign, IP address and lease time, so it allows local users to find each other for direct connects when using DHCP addresses.

The output can be found here: <http://db0myk.prgm.org/dhcp.php>

(This visualization could probably be more centralized if there should be more interest in future).

A short view to the modifications in the 'functions.php' from the package shows the new function which searches for the callsign to a given Ethernet/MAC address:

```
function getcallsign($mac)
{
    //mac-add<->callsign assignment can be found in DDMode.log which is created in logpath of ircDDBGateway
    //path needs to be set in config.php

    $ddmode_log = "/var/log/dstar/DDMode.log";
    $open_file = fopen($ddmode_log, "r") or die("Unable to open DDMode-Logfile.");
    if ($open_file)
    {
        $mac = rtrim($mac);
        while (!feof($open_file))
        {
            $read_line = fgets($open_file, 4096);
            if (strtoupper(substr($read_line, 21, 17)) == $mac) {
                return substr($read_line, 39, 8);
            }
        }
        fclose($open_file);
    }
    # $res = "/" . $mac . "/" . strtoupper(substr($read_line, 21, 17)) . "/";
    return "*****$res";
}
```

This function will be called in the modified parser function:

```
function parser($open_file)
{
    ...

    else if ($tok == "hardware")
    {
        $row_array[$line_number][3] = strtok(" ") . " - ";
        $MAC = strtok(" ");
        $MAC = strtoupper(str_replace(";", "", $MAC));
        $MAC = strtoupper(str_replace("ethernet - ", "", $MAC));
        $row_array[$line_number][3] = $MAC . " (" . getmacvendor($MAC) . ")";
        $row_array[$line_number][4] = getcallsign($MAC);
    }
    else if ($tok == "}\n")
    {
        ...
    }
}
```



Here the modified config file of phpdhcpd:

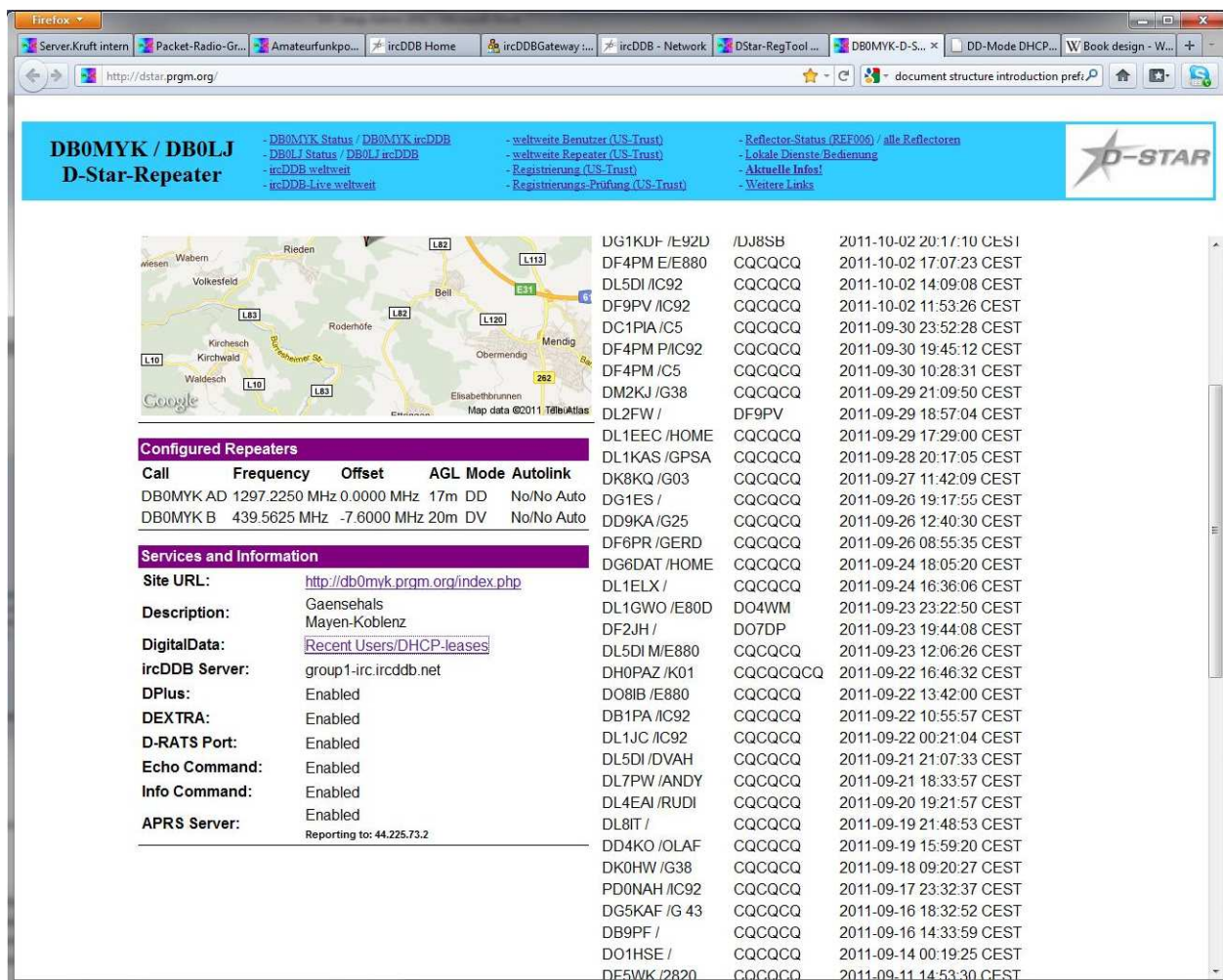
```
<?php
//phpdhcpd config file

//Location of dhcpd.leases file
$dhcpd_leases_file = "/var/lib/dhcpd/dhcpd.leases";
$ddmode_log = "/var/log/dstar/DDMode.log";

//If password is left blank, NO authentication will
//be required and the page will be visible to anyone.
//However, if it is NOT blank, the only
//way to view the page is by entering the correct password.
//This password is in cleartext, if other people can access
//this file, this is NOT secure. For true security, use
//Apache digest authentication or other methods such as
//an htaccess file.
$password = "";

//phpdhcpd version
//You don't have to change this
$version = "0.5 / modified for DStar-DD by DL5DI (20110924)";
?>
```

A added a new link to John's Dashboard which leads to the DD-information page:



The screenshot shows the D-STAR website interface. At the top, there's a navigation bar with links like "DB0MYK / DB0LJ D-Star-Repeater", "DB0MYK Status / DB0MYK ircDDB", "DB0LJ Status / DB0LJ ircDDB", "ircDDB weltweit", "ircDDB-Live weltweit", "weltweite Benutzer (US-Trust)", "weltweite Repeater (US-Trust)", "Registrierung (US-Trust)", "Registrierungs-Prüfung (US-Trust)", "Reflector-Status (REF006) / alle Reflectoren", "Lokale Dienste/Bedienung", "Aktuelle Infos!", and "Weitere Links".

Below the navigation bar, there's a map of the region around Rieden, showing various locations like Wabern, Volkesfeld, Roderhöfe, Bell, Obermendig, Mendig, Elisabethbrunnen, Waltesch, Kirchweid, and Kirchsch. The map is labeled with "Google" and "Map data ©2011 TelbAtlas".

Below the map, there's a section titled "Configured Repeaters" with a table showing the following data:

Call	Frequency	Offset	AGL	Mode	Autolink
DB0MYK AD	1297.2250 MHz	0.0000 MHz	17m	DD	No/No Auto
DB0MYK B	439.5625 MHz	-7.6000 MHz	20m	DV	No/No Auto

Below the table, there's a section titled "Services and Information" with the following data:

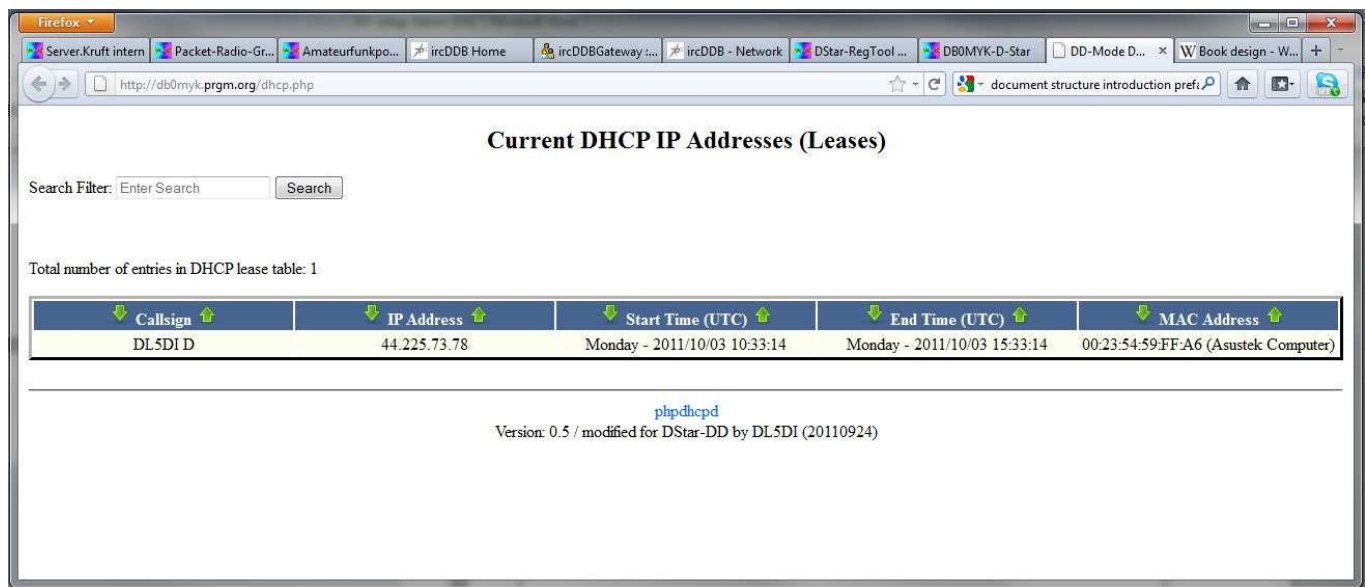
Site URL:	<a href="http://db0myk.prgm.org/index.php">http://db0myk.prgm.org/index.php</a>
Description:	Gaensehals Mayen-Koblenz
DigitalData:	<a href="#">Recent Users/DHCP-leases</a>
ircDDB Server:	group1-irc.ircddb.net
DPlus:	Enabled
DEXTRA:	Enabled
D-RATS Port:	Enabled
Echo Command:	Enabled
Info Command:	Enabled
APRS Server:	Enabled
Reporting to:	44.225.73.2

Below the services section, there's a list of repeaters with their call signs, frequencies, and dates. The list includes:

- DG1KDF /E92D
- DF4PM E/E880
- DL5DI /C92
- DF9PV /C92
- DC1PIA /C5
- DF4PM P/C92
- DF4PM /C5
- DM2KJ /G38
- DL2FW /
- DL1EEC /HOME
- DL1KAS /GPSA
- DK8KQ /G03
- DG1ES /
- DD9KA /G25
- DF6PR /GERD
- DG6DAT /HOME
- DL1ELX /
- DL1GWO /E80D
- DF2JH /
- DL5DI M/E880
- DH0PAZ /K01
- DO8IB /E880
- DB1PA /C92
- DL1JC /C92
- DL5DI /DVAH
- DL7PW /ANDY
- DL4EA /RUDI
- DL8IT /
- DD4KO /OLAF
- DK0HW /G38
- PD0NAH /C92
- DG5KAF /G 43
- DB9PF /
- DO1HSE /
- DE5WK /2820

Each repeater entry is followed by a date and time in CEST format, such as "2011-10-02 20:17:10 CEST".

Following the link shows the modified 'phpdhcpd' page:



Callsign	IP Address	Start Time (UTC)	End Time (UTC)	MAC Address
DL5DI D	44.225.73.78	Monday - 2011/10/03 10:33:14	Monday - 2011/10/03 15:33:14	00:23:54:59:FF:A6 (Asustek Computer)

## 6. Closing

I hope this documentation helps to get some more DStar-DD-Repeaters to the worldwide network.

128kBit/s is not the speed like used on the WLAN-based part of the Hamnet, nothing for Video streams and fast file transfers, but it is much faster and comfortable than usual Packet-Radio speeds and has a much better coverage range than WLAN in areas which are not flat and less populated with hams like here.

It is much more effective.

Yes, the ID1 is expensive and there is no alternative available, but it is a nice radio, analog and digital voice, digital data, high-speed modem and 'tnc' all integrated.

It really works Plug&Play if the repeaters do support it, like it can easily be done with ircDDBGateway!

Have fun with DStar Digital Data and join the ircDDB network!

Hans-J. Barthen, DL5DI

ircDDB Team

<http://www.ircddb.net>